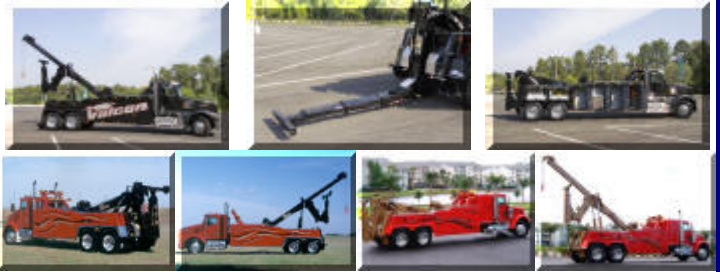




[Standard Features](#)
[Optional Equipment](#)
[Specifications](#)
[Chassis Recommendations](#)
[Back to Product Line](#)



SERIES V-60, V60-B and V-70

The Intelligent Choice For Heavy Duty Towing and Recovery Equipment

For the right mix of power, performance and value, Vulcan's V60, and V70 are the intelligent choice for heavy duty integrated towing and recovery equipment. Vital components are fabricated from high yield steel to minimize weight to allow for more legal payload while maximizing strength and durability. The hydraulic components are engineered at the heart of the unit to provide the power to the winches, boom and underlift to handle the most demanding jobs. The patented double action tilt system is just one of the features that exemplifies Vulcan's superior design with the ability to tilt a full 16,000 lbs. under load. At Vulcan, we believe that your equipment is only as good as its weakest component, so we take a total design approach to assure your V60 or V70 is the most intelligent choice you can make for years of trouble free service.

Note: Some optional equipment may be shown. Other Vulcan Towing and Recovery Equipment is available from your local Vulcan Distributor.

VULCAN V-60, V-60B & V-70 SERIES - STANDARD FEATURES

Drivers and Passenger Side Manual Controls Full Function Remote Lanyard Controls (passenger side) Fork Receivers 6 Pairs of Lifting Attachments High Stands Lighted Tool Compartments Chain Racks & Tool Holders Independent Hydraulic Rear Spades Pavement Pads Dual Pressure Gauges	Light Pylon 7-Way Switch Panel FMVSS Lighting Independent Power Tilt Lower Work Lights 2 Section Hydraulic Ppump Underlift In-Cab-Controls Mud Flaps Air Operated Clutch Release & Tensioner Safety Chains
--	---

VULCAN V-60, V-60B & V-70 SERIES - OPTIONAL EQUIPMENT

BODY OPTIONS

Tandem Axle 160", 180" or 200" C.T.
(Available in steel or aluminum)

OPTIONAL EQUIPMENT

Emergency Lighting Tunnel Tool Box 5th Wheel Adaptor Dress Up Packages Air Shift P.T.O.	Wireless Remote Control Heavy Duty Tire Lift Other Lifting Attachments Pintel Adaptor Many Other Popular Vulcan Options
---	---

VULCAN V-60, V-60B & V-70 SERIES - SPECIFICATIONS

	V60B	V60	V70
Boom: Retracted at 35° (TEMA)	60,000 lbs.	60,000 lbs.	70,000 lbs.
Extended at 35° (TEMA)	26,000 lbs.	26,000 lbs.	26,000 lbs.
Extension stroke	120"	120"	120"
Maximum lift angle	35°	35°	35°
Maximum boom height, spades	18' 7"	18' 7"	18' 7"
up	50.6"	50.6"	50.6"
Reach past underlift at 35°	25,000 lb. worm	30,000 lb. Planetary	35,000 lb. Planetary
Winches: (Each)			
Cable: Per Winch	200' x 5/8"	200' x 5/8"	200' x 3/4"
Underlift:			
Lift capacity extended with	16,000 lbs.	16,000 lbs.	16,000 lbs.
forks	13,000 lbs.	13,000 lbs.	13,000 lbs.
Lift capacity extended on wheel	35,000 lbs.	35,000 lbs.	38,000 lbs.
lift			
Lift capacity retracted with forks	117"	117"	117"
Reach to center of standard			
forks	48"	48"	48"
(Extended)			
Reach to center of standard			
forks			
(Retracted)			
Suggested Chassis Minimum:			
GVWR (Tandem axle)	50,000 lbs.	50,000 lbs.	50,000 lbs.
Tandem axle (minimum)	38,000 lbs.	38,000 lbs.	38,000 lbs.
Minimum cab to trunion	160"	160"	160"
Minimum frame length behind	63"	63"	63"
C/T			

Note: Ratings are based on structural factors only - not chassis capacity. All chassis specifications are minimums, heavier specifications may be required depending on chassis and equipment weights.

Note: Specifications subject to change without notice. All ratings specified are based on structural factors only, not vehicle capacities or capabilities.